

# About the Park and Master Plan

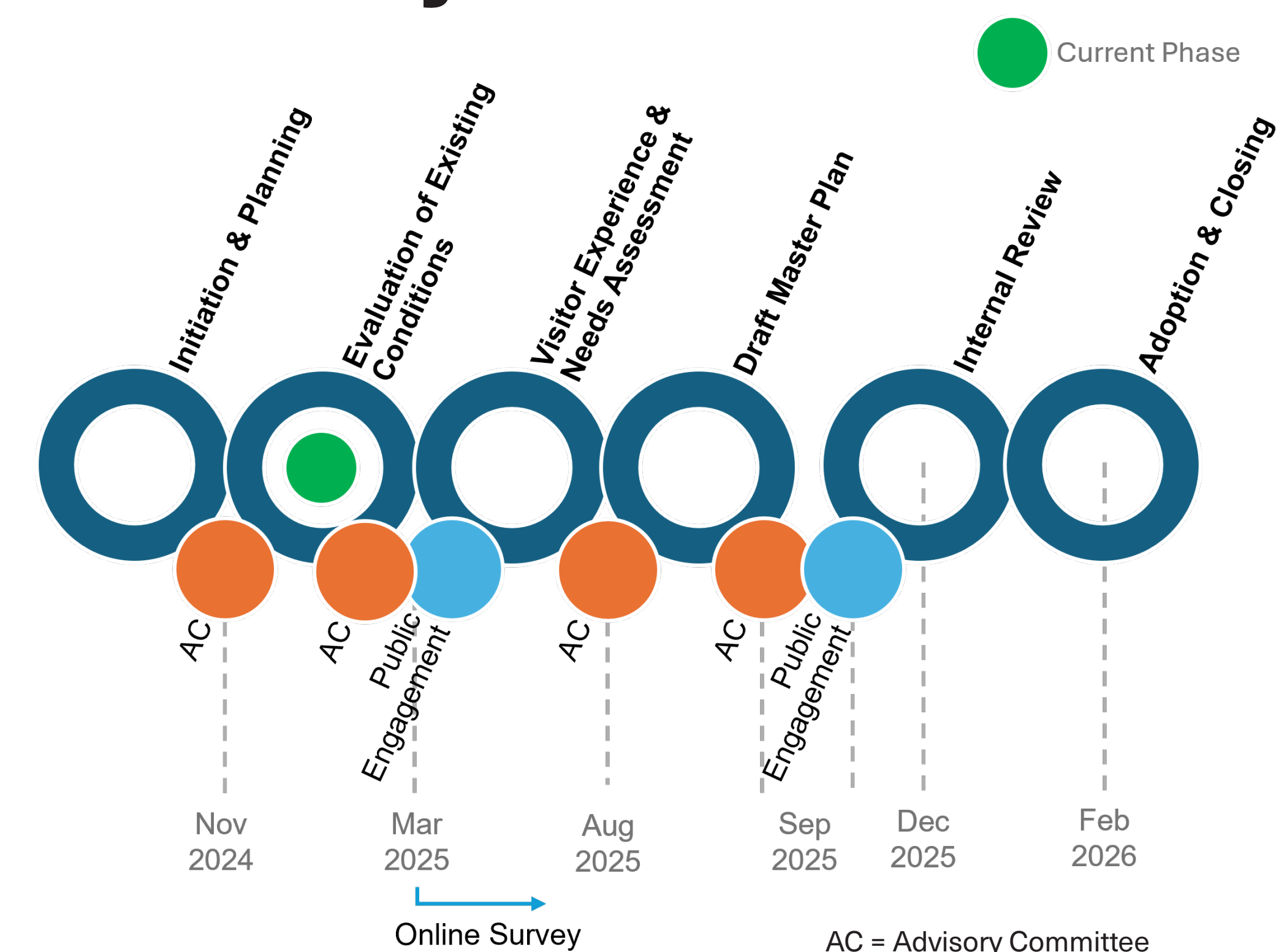
Sweet Run State Park is open while currently under development. It features expansive views of the Blue Ridge Mountains. Sweet Run and Piney Run streams bisect the property. The property includes trails along streams, through mature forest, meadows and mountain-side terrain, and has a picnic pavilion and nature play area for children. The property is steeped in history, featuring the ruins of a 19th century farming community. It also has a restored farmhouse built in the 1840s.

In accordance with Virginia State Code § 10.1-200.1, a master plan is required for Sweet Run State Park as a new state park for which land was recently acquired. A state park master plan is **a guide for the development, utilization, and management of a state park and its natural, cultural, and historic resources**. The purpose of the master plan is to establish goals, objectives, and recommendations for prioritizing new, improved, and expanded park facilities and services.

## Quick Overview

- 884 acres
- 11 miles of trails
- Nature play area
- Picnic pavilion
- Equestrian trailer parking
- Fishing pond
- Interpretive Center

## Project Timeline



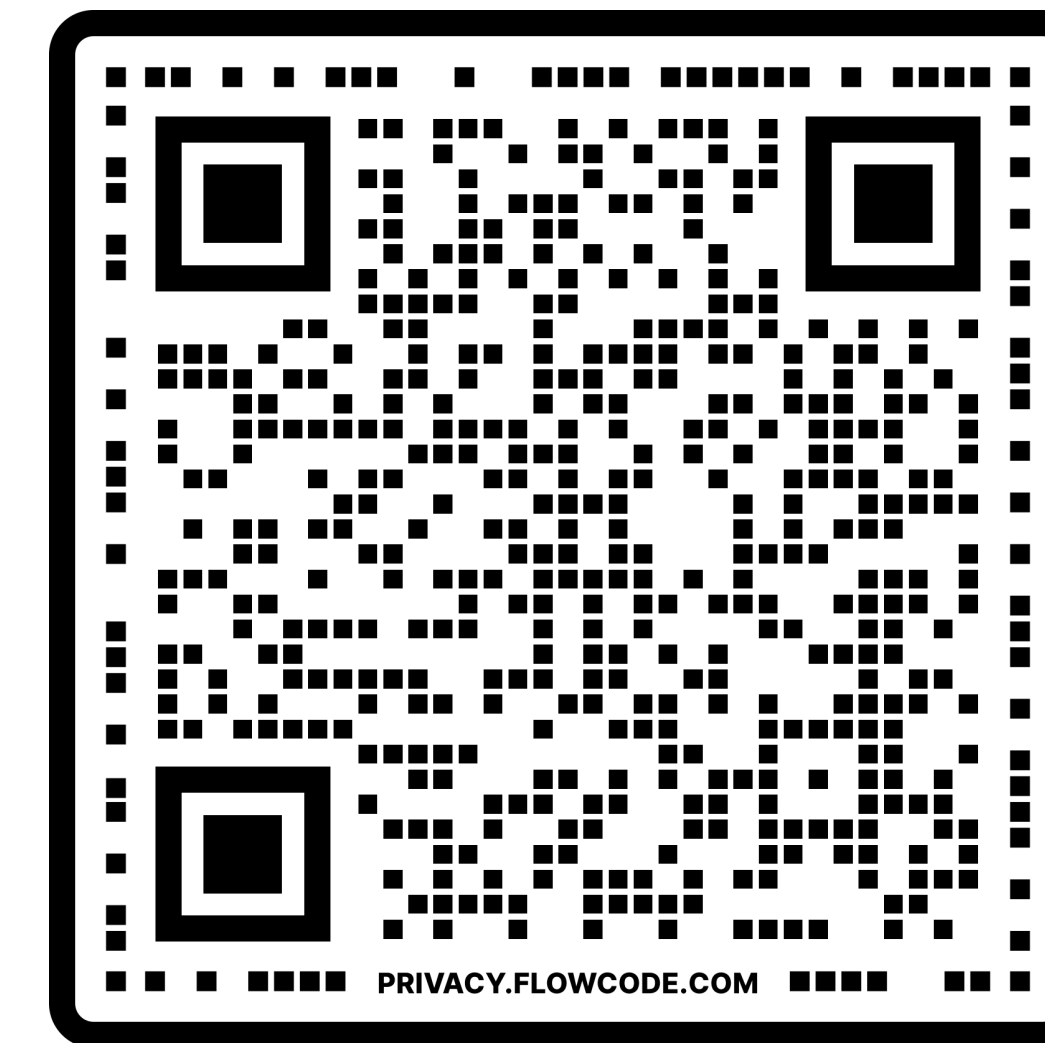
# Share your ideas

and influence how Sweet Run State Park will serve visitors and preserve the beauty of the Between the Hills area for years to come.

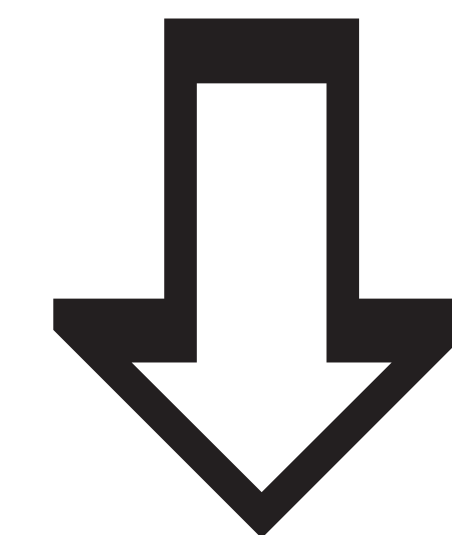
## The survey:

- takes about 10-15 minutes to fill out.
- covers topics about your familiarity with the park, the park's character, and potential future uses and programs.
- is the best way to make your voice heard!

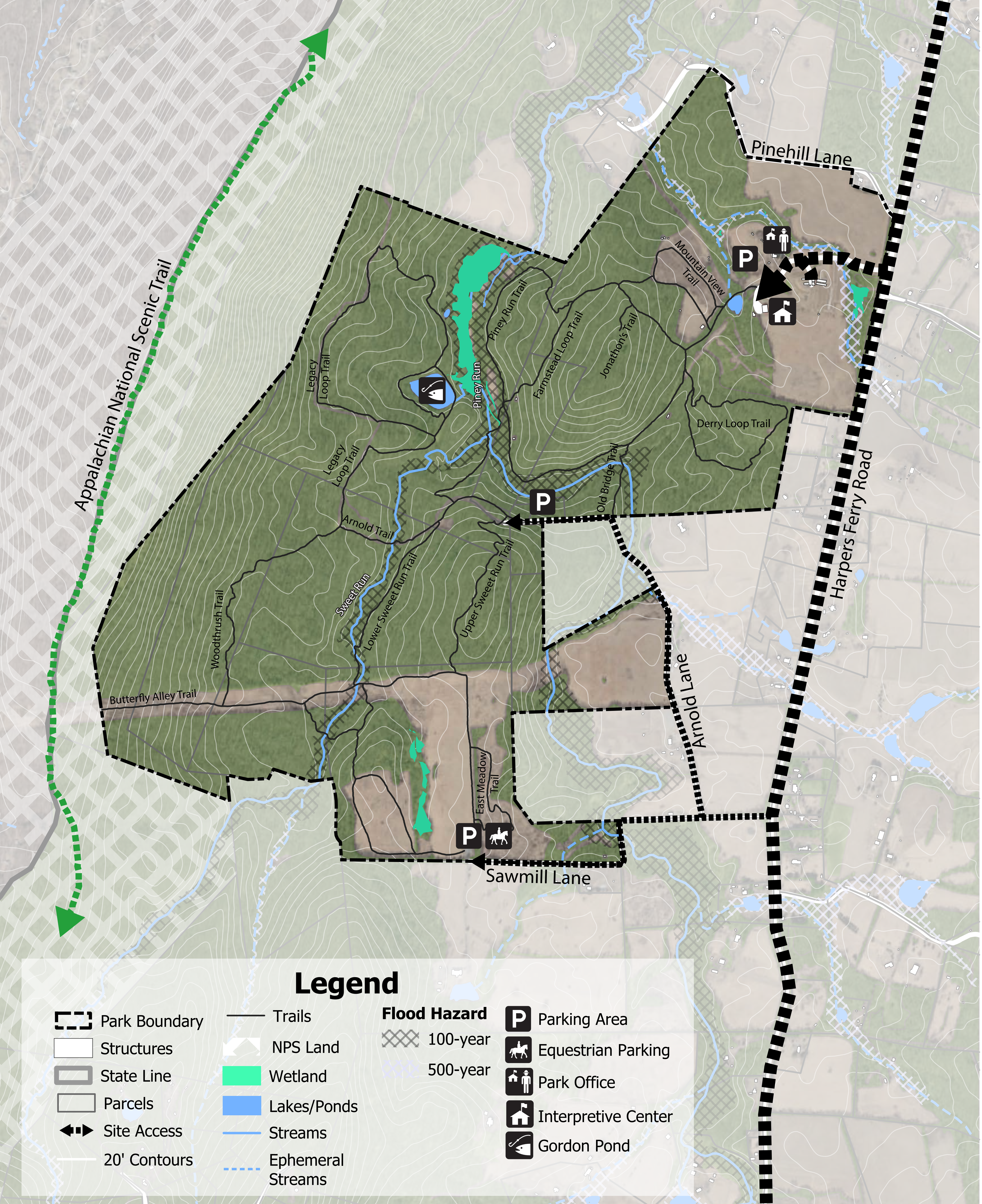
**Scan the QR code**  
to fill out the survey on your phone.



**Paper surveys**  
are also available tonight.







# Plannning Basemap



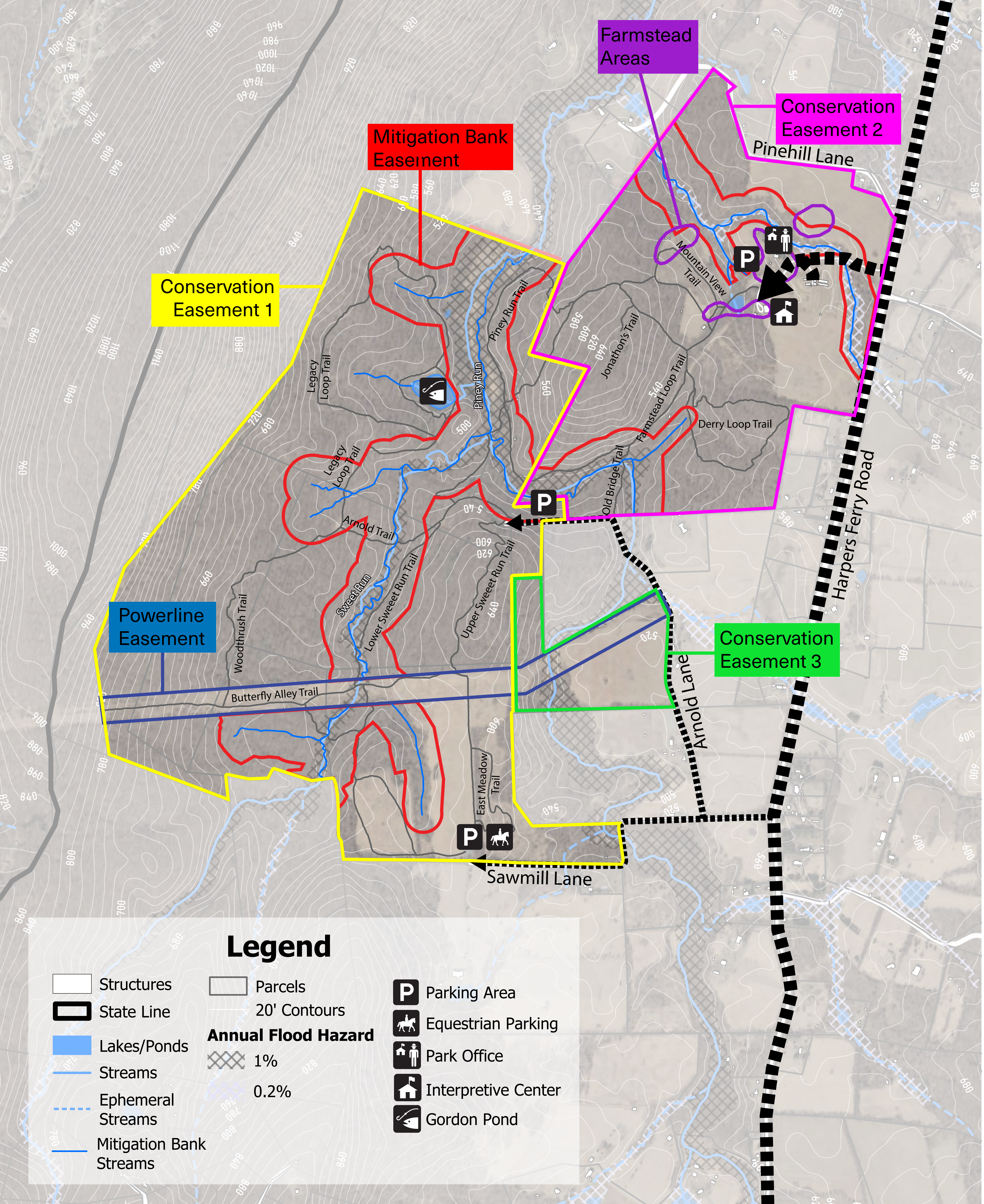
0 500 1,000 2,000 Feet

Graphic Scale 1" : 1,250'



## NOTES





# Easements Summary



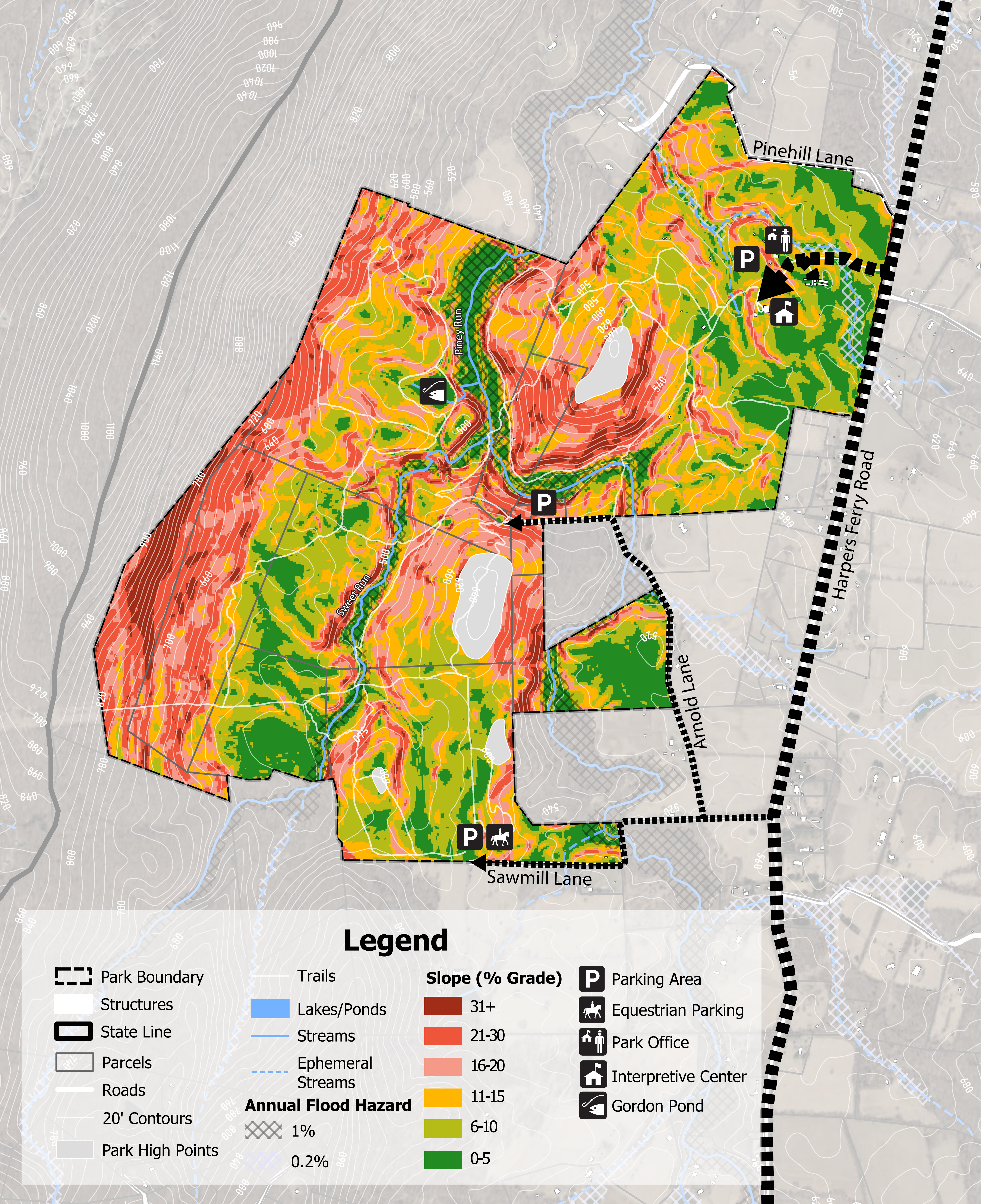
0 500 1,000 2,000 Feet

Graphic Scale 1" : 1,250'



## NOTES





# Slope Analysis



0 500 1,000 2,000 Feet

Graphic Scale 1" : 1,250'



## NOTES



Ecological Cores are large patches of natural land with at least 100 continuous acres of interior cover. Ecological Cores are ranked by Ecological Integrity based on variables including rare species habitats, habitat diversity, resilience, and water quality, to reflect the wide range of important benefits and ecosystem services they provide. Outstanding cores tend to be large in area, of deepest interior, of greatest water quality protections, highest in habitat diversity and rich in rare species, including species listed as threatened or endangered. Of all Ecological Cores in the Commonwealth 1% are ranked as C1.

### Legend

Park Boundary

Trails

**Ecological Cores**

Outstanding

High

Moderate

Parking Area

Equestrian Parking

Park Office

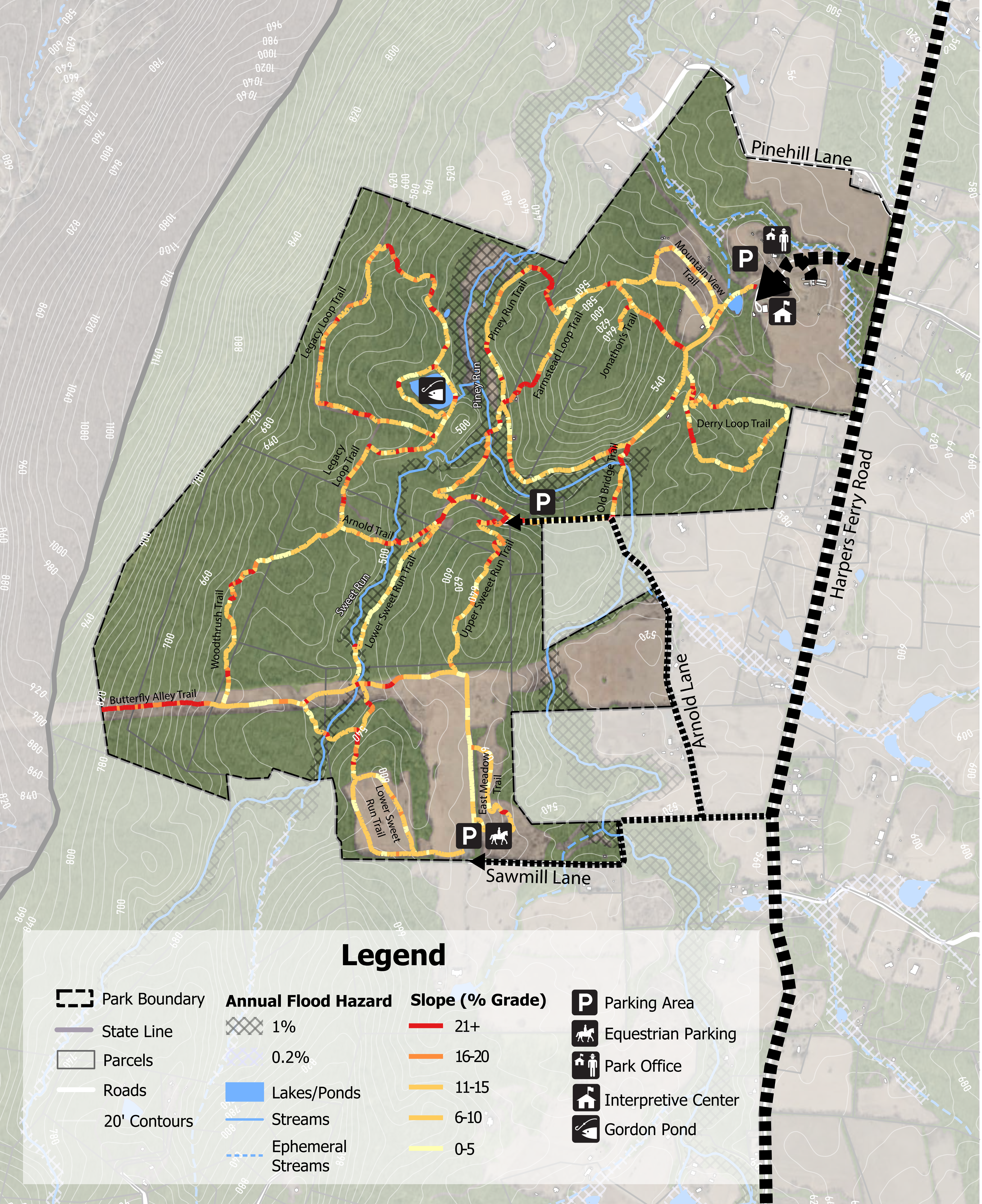
Interpretive Center

Gordon Pond

A map of Sweet Run State Park and surrounding areas. The map is overlaid with colored regions representing Ecological Cores: a large red area (Outstanding) in the center and west, a yellow area (High) to the east, and a green area (Moderate) to the south. A dashed black line outlines the park boundary. White lines represent trails. Several icons are placed on the map: a 'P' in a square (Parking Area) near the top center, a 'P' with a horse icon (Equestrian Parking) near the bottom center, a house with people icon (Park Office) near the top right, a house with a flag icon (Interpretive Center) near the bottom center, and an eye in a square icon (Gordon Pond) near the center. A green dotted arrow points from the bottom left towards the top left. A thick black dashed line runs vertically on the right side of the map. Labels on the map include 'Silver G...', 'Maple Ridge Ln', 'Blue Ridge Acres', 'Sweet Run State Park', 'LOUDOUN VALLEY', 'Snider Ln', and 'Bittersweet Ln'. Elevation markers '692 ft' and '810 ft' are also visible.

# Ecological Cores





# Trail Conditions



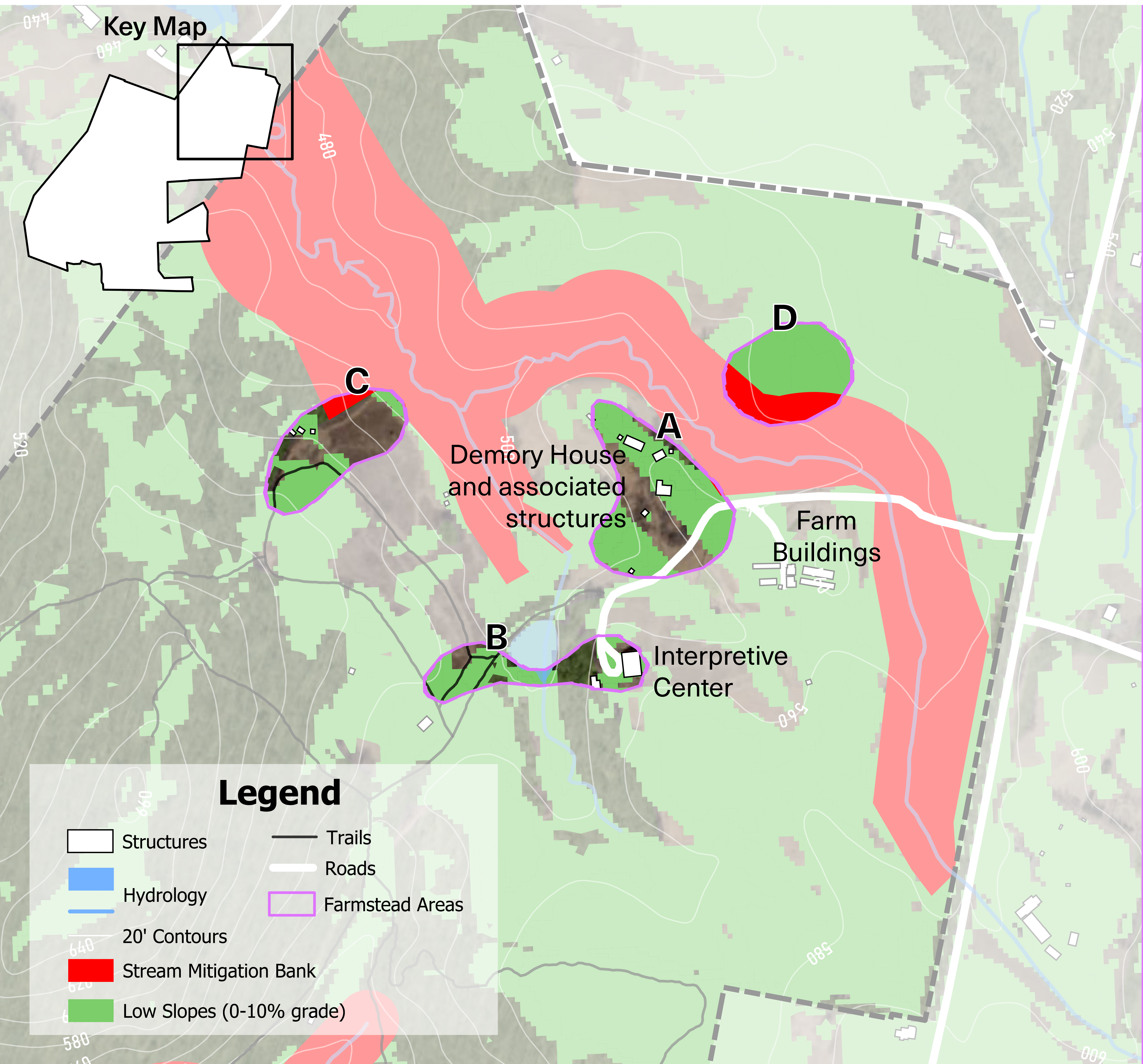
0 500 1,000 2,000 Feet

Graphic Scale 1" : 1,250'

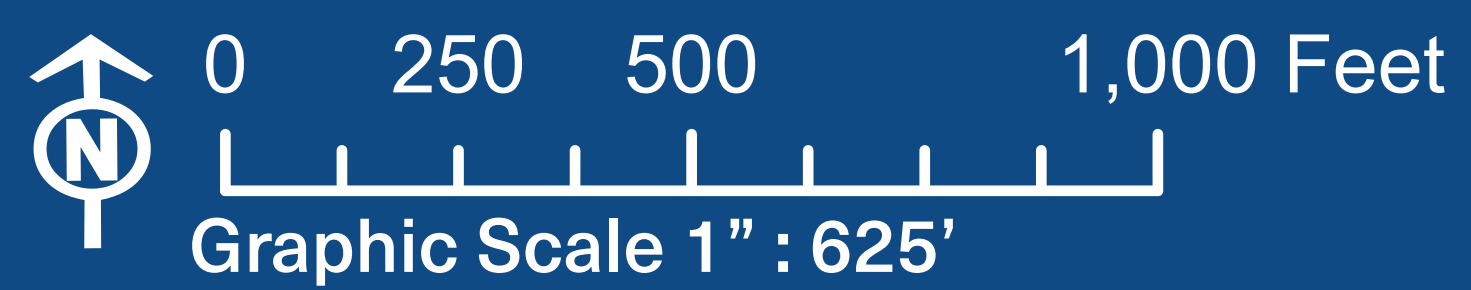


## NOTES





# Farmstead Areas



NOTES