



The interior (west end) of Swift Creek Banquet Hall.



The interior (east end) of Swift Creek Banquet Hall.

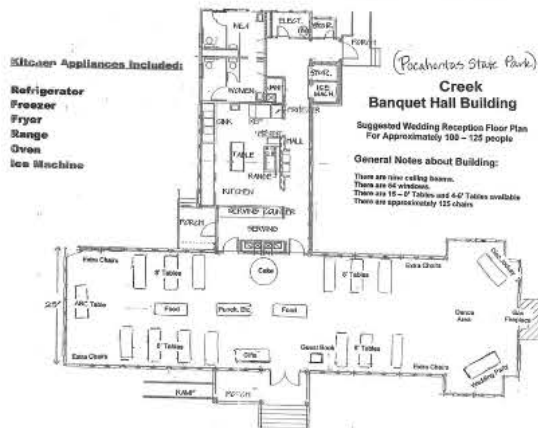


Diagram of Swift Creek Banquet Hall.



Kitchen – Swift Creek Banquet Hall. Industrial size kitchen appliances are included.

**Meeting room Size:**  
 Swift Creek 92' X 24'  
 Powhatan 92' X 22'

# **2025 FEE SCHEDULE** **BANQUET HALLS** **(Friday, Saturday and Sunday Rentals)** **(10 a.m. to 10 p.m.)**

Algonquian (Powhatan) Hall	\$600
Two-Day Package	\$900
Three-Day Package	\$1,300
Swift Creek Banquet Hall	\$750
Two-Day Package	\$1,200
Three-Day Package	\$1,700

## **(Monday– Thursday Rentals)** **(10 a.m. to 10 p.m.)**

Algonquian (Powhatan) Hall	\$300
Swift Creek Banquet Hall	\$375

## **Package Rates not discounted** **Monday - Thursday**

**Banquet Halls are rented by calling the Virginia State Park Customer Service Center at 1-800-933-PARK (7275). They can be rented up to eleven months in advance of the first day of the reservation. Cancellation policy 50% refund outside 60 days of arrival and no refund within 60 days of arrival.**  
 Both Banquet Halls come with industrial size kitchen appliances and ice machine, 18– 8 foot tables and 3–6 foot tables, open wood ceiling beams, windows on 3 sides overlooking a serene wooded area, main double doors and fireplace. Both are fully handicapped accessible.

**Pocahontas State Park**  
**10301 State Park Road**  
**Chesterfield, Virginia 23832**  
**804-796-4255**

# **VIRGINIA STATE PARKS**

Pocahontas State Park

## **Banquet Hall** **Facilities**

[www.virginiastateparks.gov](http://www.virginiastateparks.gov)



# Welcome to the Banquet Halls at Pocahontas State Park Chesterfield, Virginia

## BANQUET HALL FACILITIES

The two Banquet Hall facilities consist of a main hall each, with tables and chairs, modern restrooms, a modern all electric kitchen with industrial size stove, oven, refrigerator, freezer, ice machine, work tables and serving line. Both facilities are heated and air conditioned. Cooking and eating utensils are not furnished.

The capacity of the Swift Creek Banquet Hall is 150.  
The capacity of the Powhatan Banquet Hall is 125.

A site right for you...

**Business Meetings  
Seminars and Training Events  
Family Reunions  
Company Picnics  
Overnight Retreats  
Weddings and Banquets**



Backside of Powhatan Banquet Hall.



Fireplace inside of Powhatan Banquet Hall.

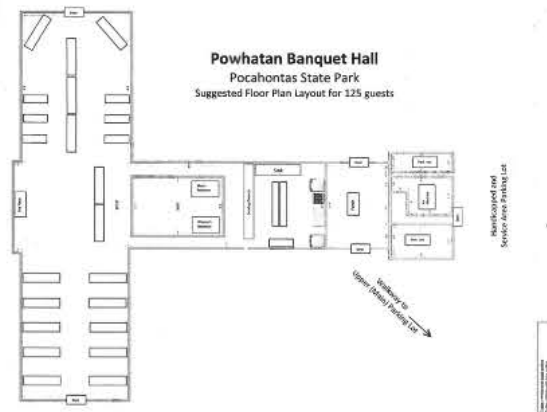


Diagram of Powhatan Banquet Hall.



Inside Bride Cabin (Powhatan Only).



Kitchen view of Powhatan Banquet Hall.

## RESERVATIONS

Reservations for Banquet Halls may be made up to eleven months in advance of the reservation start date by calling the State Park Customer Service Center at 1-800-933-PARK (7275). Cancellations must also be made through this Center.

Parking fees for Banquet Hall guests is free.

The Bride Cabin is available for use when you reserve the Powhatan Banquet Hall.

If you would like to come view any of these facilities, please be sure to call the State Park Office first for availability.



Outside Bride Cabin (Powhatan Only).